

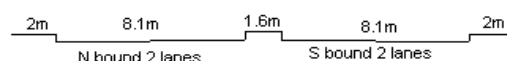
YEAR 2013

CORE STATION 1017

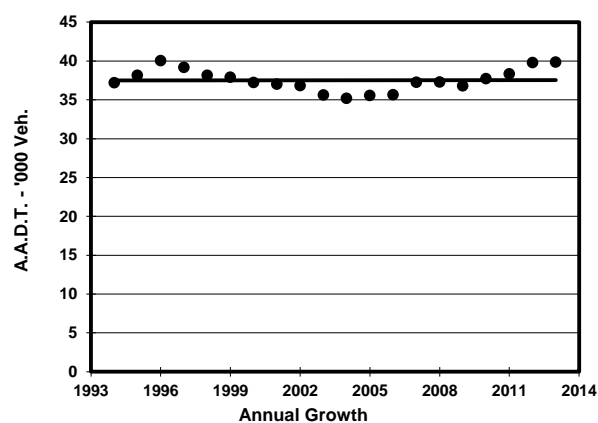
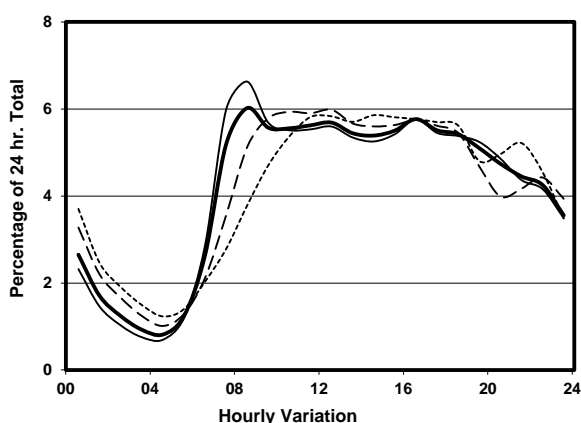
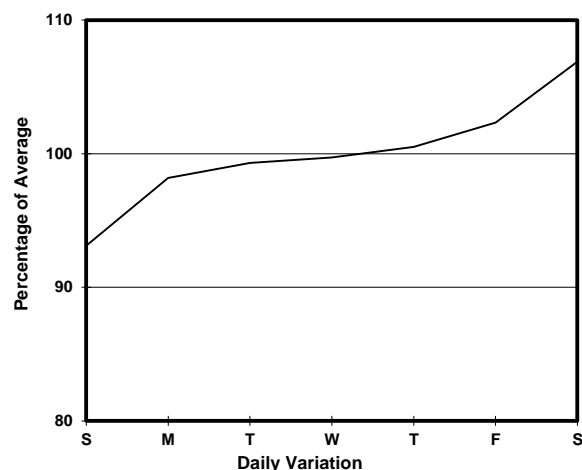
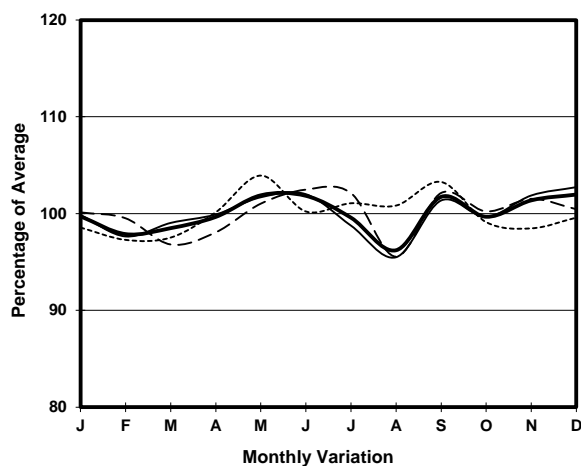
ROAD NETWORK MAJOR

ROAD TYPE DISTRICT DISTRIBUTOR

LINK AP LEI CHAU BRIDGE & AP LEI CHAU BRIDGE RD
(from WONG CHUK HANG RD to AP LEI CHAU EST)



1. TRAFFIC FLOW VARIATION AND GROWTH



2. TRAFFIC CHARACTERISTICS (BY DIRECTION)

Parameter	All - Day	Mon. - Fri.	Sat.	Sun.
SOUTH BOUND				
A.A.D.T.	19650	19690	21070	18470
R 12 / 24 - %	64.1	64.8	63.6	60.4
R 16 / 24 - %	84.7	85.8	82.5	81.7
AM Peak Hour	0800-0900	0800-0900	0900-1000	0900-1000
One-way flow at AM peak hour	1040	1140	1110	750
T - % (AM)	-	-	-	-
PM Peak Hour	1600-1700	1600-1700	1600-1700	1600-1700
One-way flow at PM peak hour	1140	1140	1250	1080
T - % (PM)	-	-	-	-
Prop.of commercial vehicles - 16 hr.	-	-	-	-
NORTH BOUND				
A.A.D.T.	20190	20290	21660	18740
R 12 / 24 - %	69.2	70.2	68.3	65
R 16 / 24 - %	85.7	86.6	84	82.8
AM Peak Hour	0800-0900	0700-0800	0900-1000	0900-1000
One-way flow at AM peak hour	1360	1520	1370	1000
T - % (AM)	-	-	-	-
PM Peak Hour	1600-1700	1600-1700	1700-1800	1700-1800
One-way flow at PM peak hour	1150	1170	1260	1110
T - % (PM)	-	-	-	-
Prop.of commercial vehicles - 16 hr.	-	-	-	-

3. OTHER INFORMATION AND COMMENT